

Deploying Oracle Banking Trade Finance Application on
WebLogic
Oracle Banking Trade Finance
Release 14.4.0.0.0
[April] [2020]

Table of Contents

1. DEPLOYING ORACLE BANKING TRADE FINANCE ON WEBLOGIC.....	1-1
1.1 INTRODUCTION	1-1
1.2 BUILDING APPLICATION	1-1
1.2.1 Building Application	1-1
1.3 DEPLOYING APPLICATION IN ORACLE WEBLOGIC	1-1
1.3.1 Deploying Integration Adapter EAR from WebLogic Administration Console	1-1
1.3.2 Deploying Dependency Library “Jax-RS”	1-7
1.3.3 Deploying OBTFM Application from WebLogic Administration Console.....	1-11
1.3.4 Deploying Gateway/Scheduler Applications from WebLogic Administration Console	1-19

1. Deploying Oracle Banking Trade Finance on WebLogic

1.1 Introduction

This chapter explains the steps to deploy Oracle Banking Trade Finance application into Oracle WebLogic application server.

1.2 Building Application

For building Oracle Banking Trade Finance Application, refer to the following chapters.

1.2.1 Building Application

Refer to the chapter 'Building Application'. This includes the following details:

- Creating Property File
- Building EAR File
- Configuring Plug-ins
- Loading Properties Files

1.3 Deploying Application in Oracle WebLogic

This section explains the method of deploying Oracle Banking Trade Finance Application into Oracle WebLogic application server.

1.3.1 Deploying Integration Adapter EAR from WebLogic Administration Console

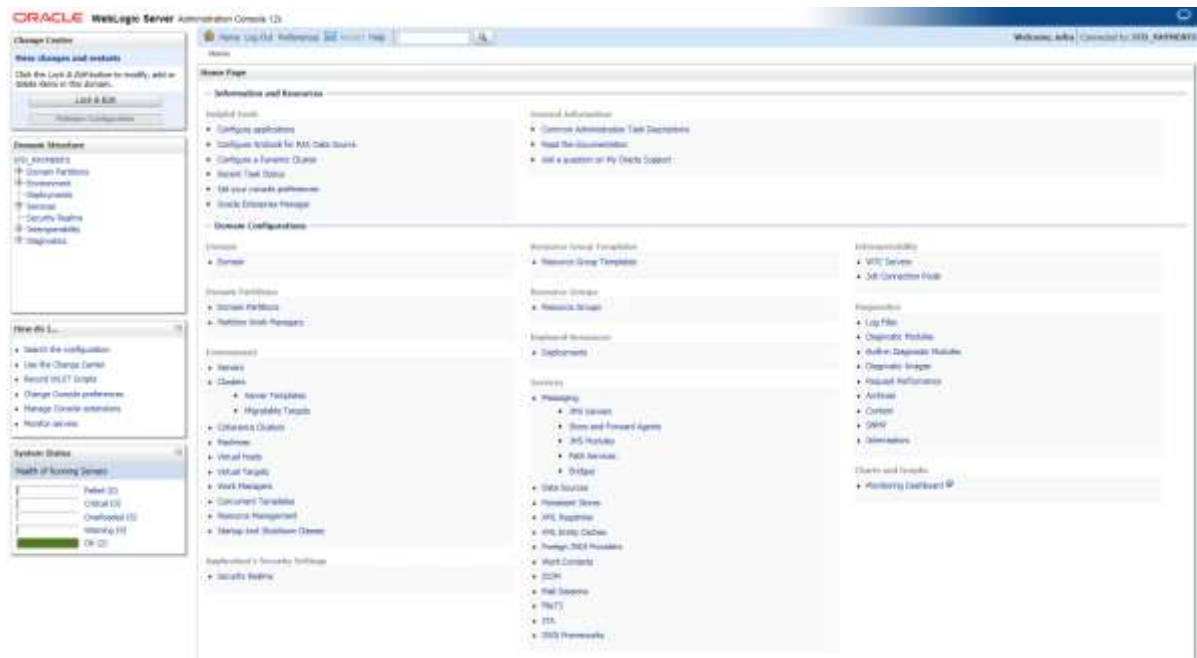
To deploy Oracle Banking Trade Finance Application from Oracle WebLogic administration console, follow the steps given below.

1. Start the Administrative Console of WebLogic application server. You can start this by entering Oracle WebLogic Admin Console URL in the address bar in an internet browser.
Eg: `http://10.10.10.10:1001/console`

The following screen is displayed:

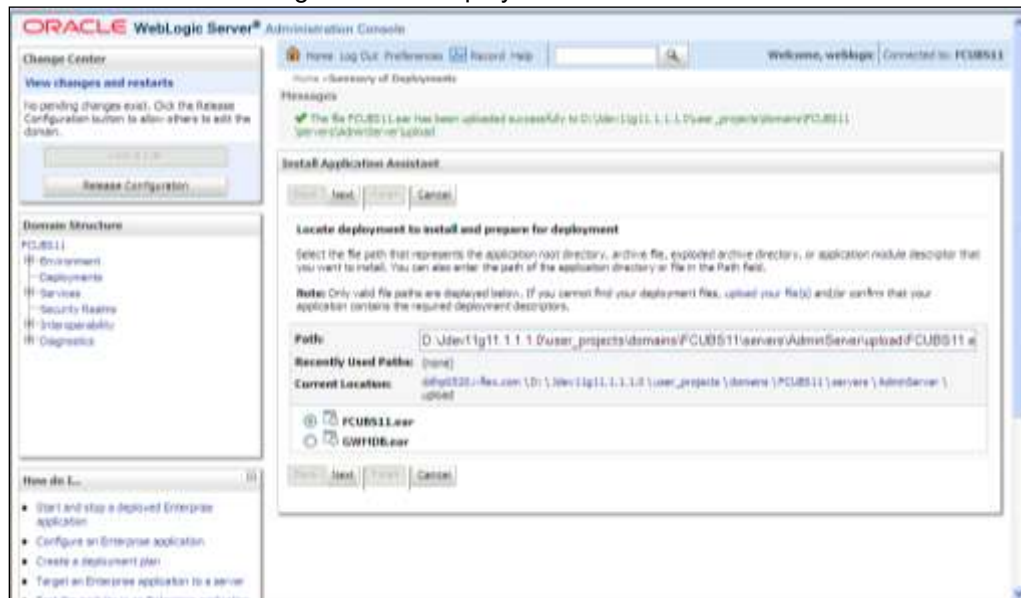


- Specify the WebLogic administrator user name and password. Click 'Log In'.



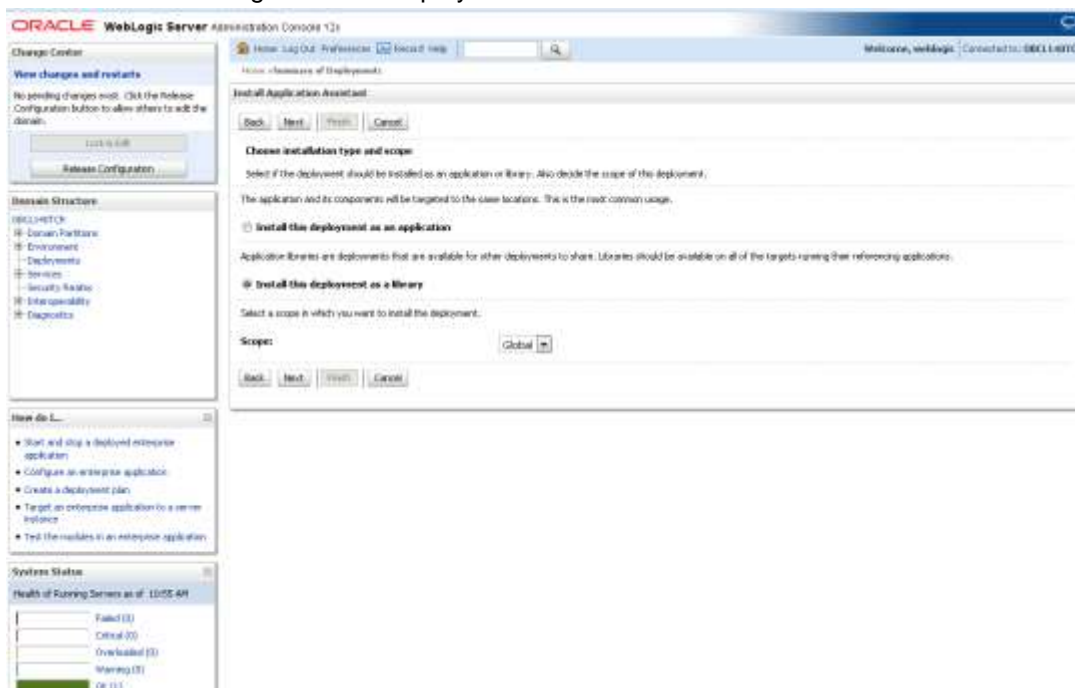
- You need to deploy an Integration adapter EAR. For e.g. 'OBTFExtAdapter.ear'. Go to 'Deployment'. Click 'Lock & Edit' button to enable the buttons. This action enables the buttons.

7. Click 'Next'. The following screen is displayed.



8. Select the application Adapter EAR from the list.

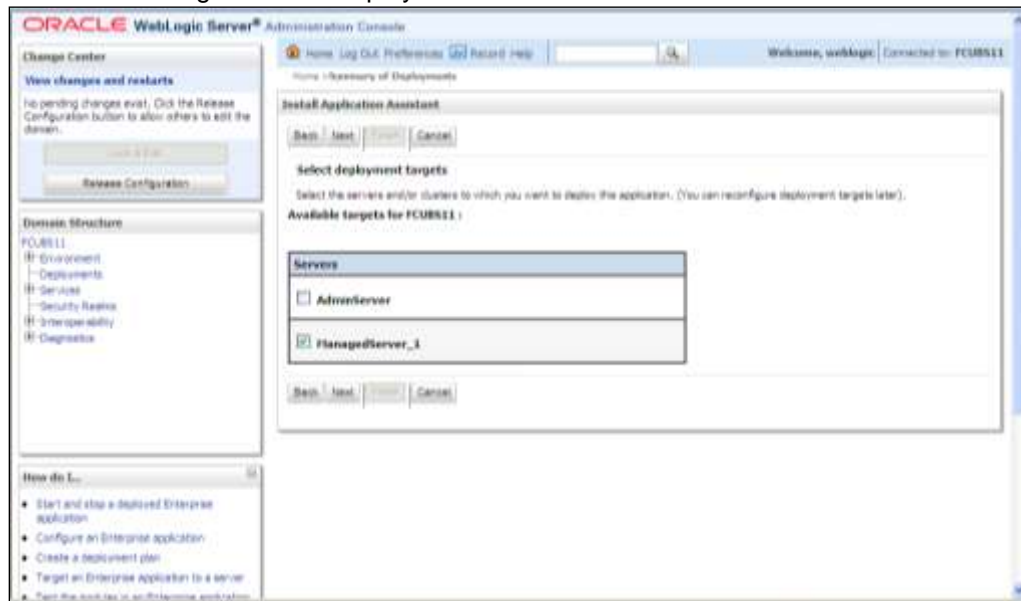
9. Click 'Next'. Following screen is displayed:



10. Choose the targeting style 'Install this deployment as a library'.

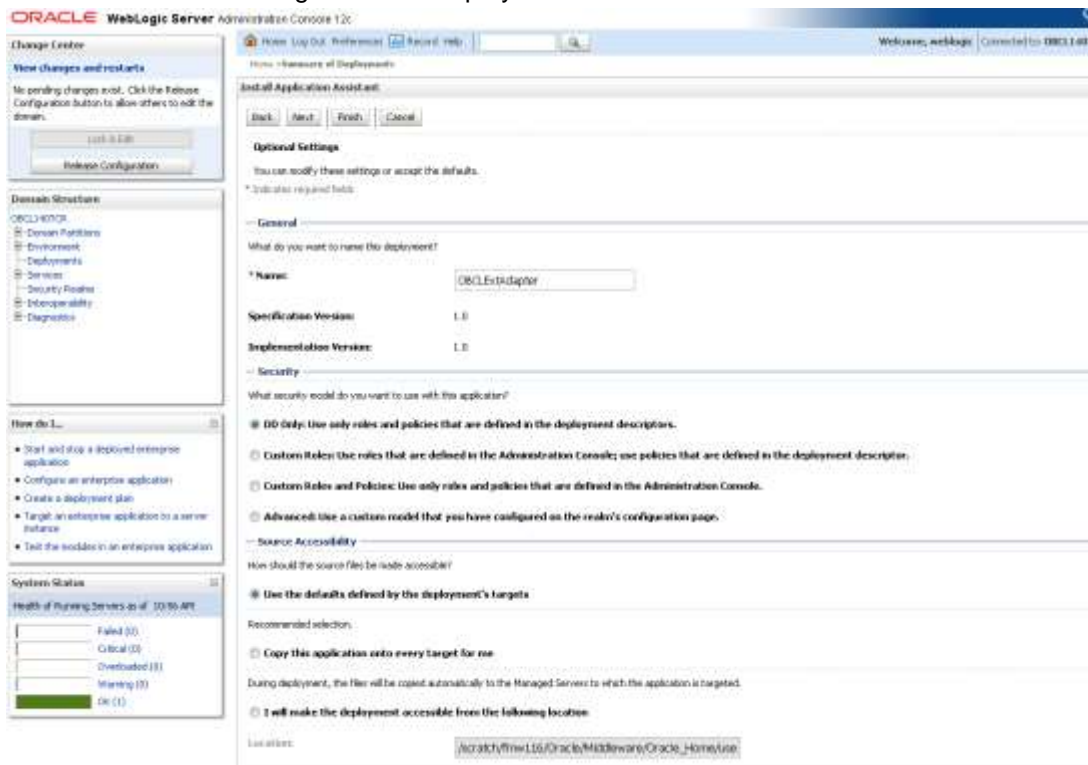
11. Click 'Next'.

12. The following screen is displayed



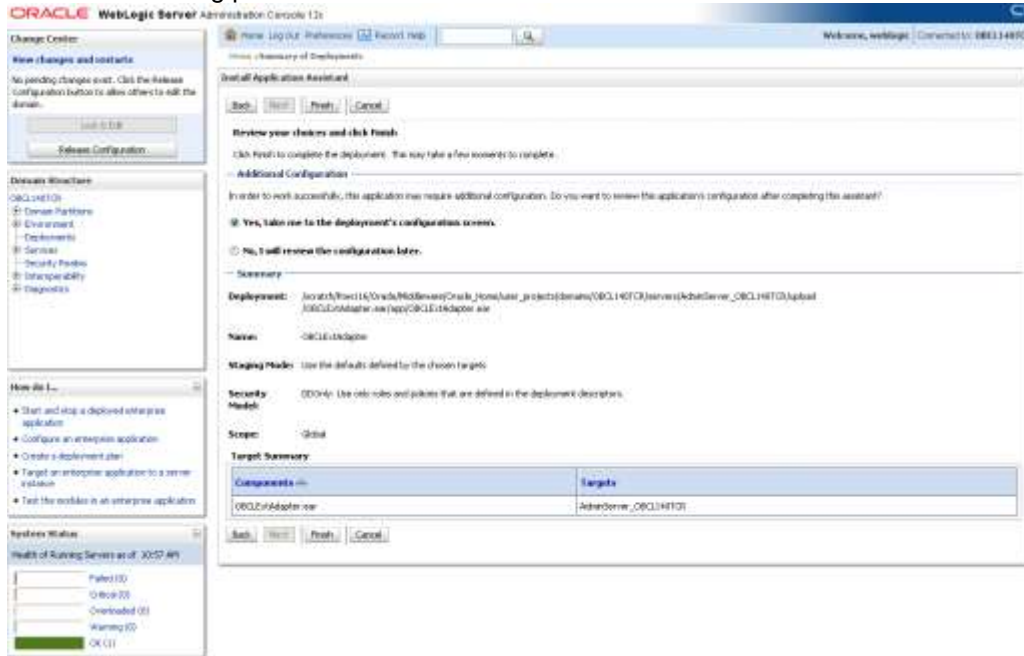
13. Select the target of the application. You can choose the server 'AdminServer' or 'Managed Server(s)'.

14. Click 'Next'. The following screen is displayed.

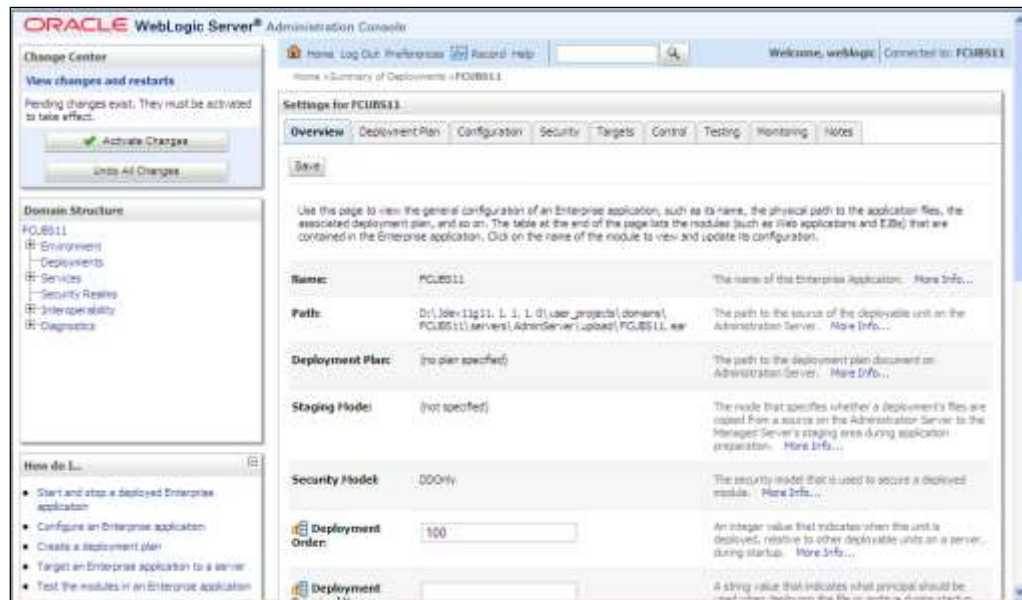


15. Check the deployment name.

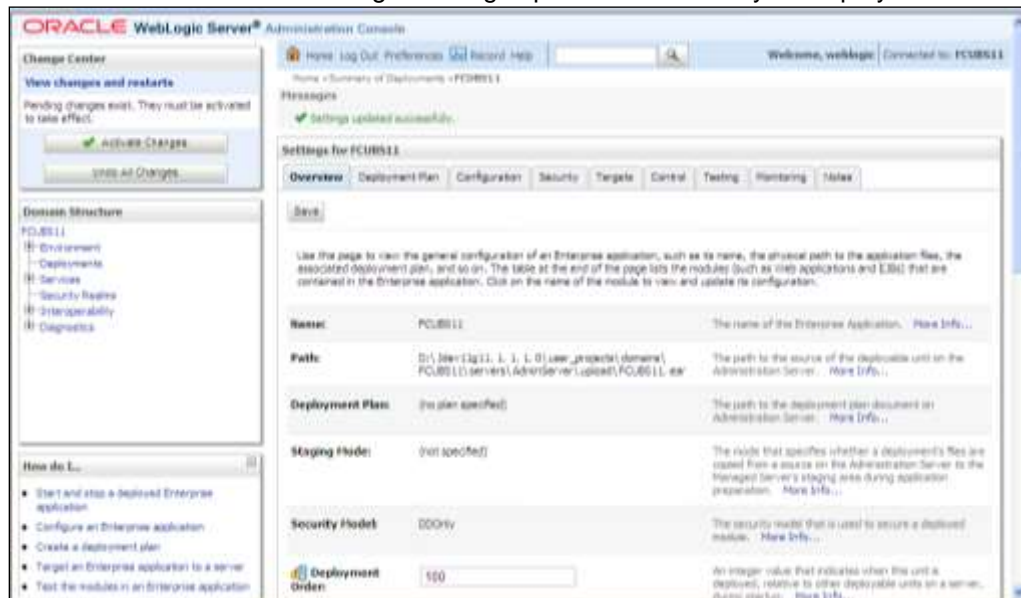
16. The remaining portion of the screen is shown below:



17. Click 'Finish' button. The following screen is displayed.



18. Click 'Save' button. The message 'Settings updated successfully' is displayed.



19. Click 'Activate Changes' button on the left pane. The message 'All the changes have been activated. No restarts are necessary' is displayed.

1.3.2 Deploying Dependency Library "Jax-RS"

This library must be installed before deploying OBTF.ear. Follow the below steps

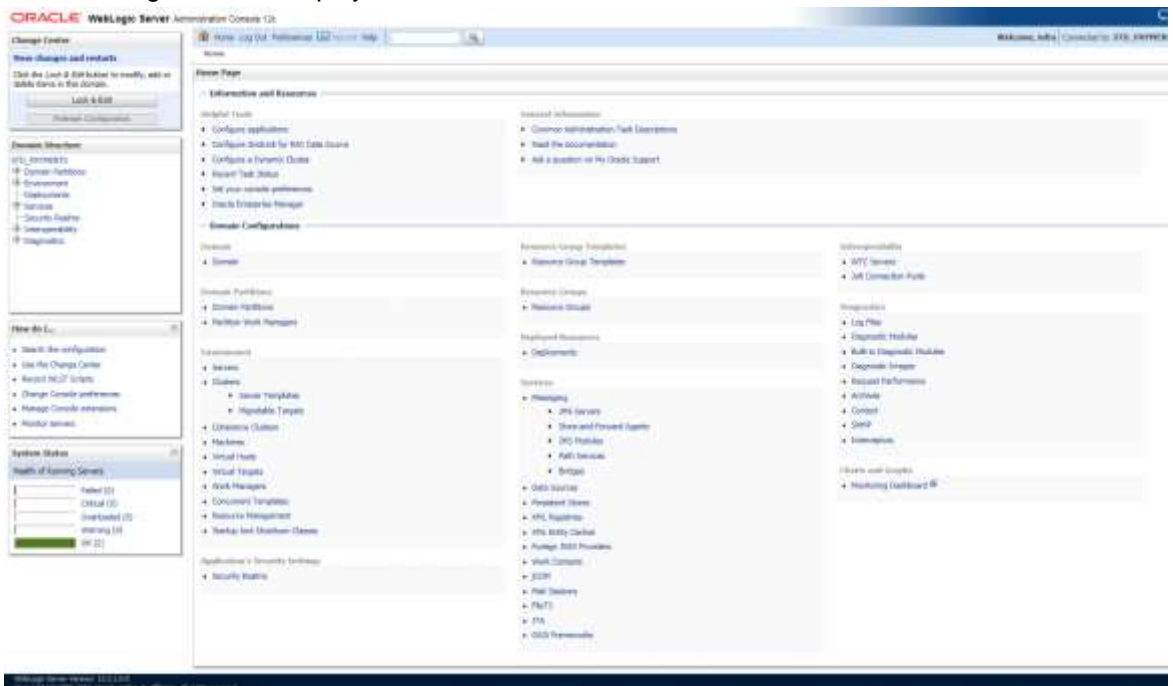
1. Start the Administrative Console of WebLogic application server. You can start this by entering Oracle WebLogic Admin Console URL in the address bar in an internet browser.
Eg: <http://10.10.10.10:1001/console>

2. The following screen is displayed:

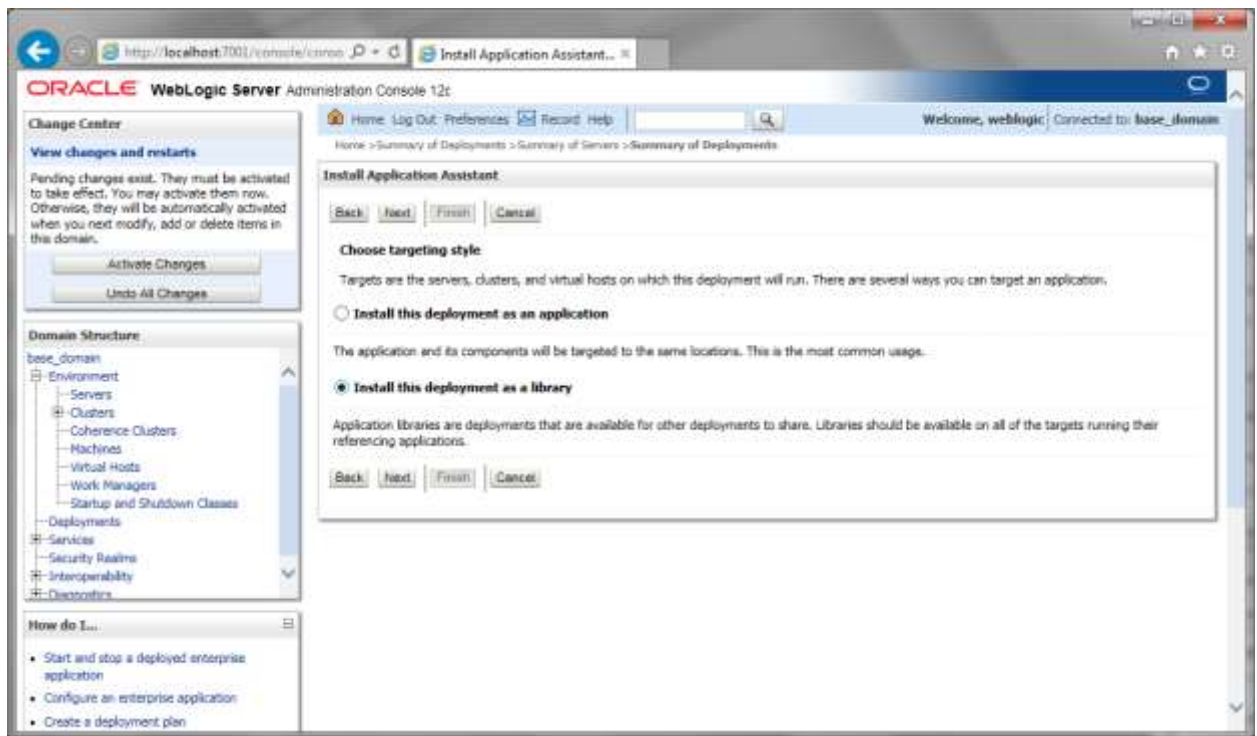


3. Specify the WebLogic administrator user name and password. Click 'Log In'.

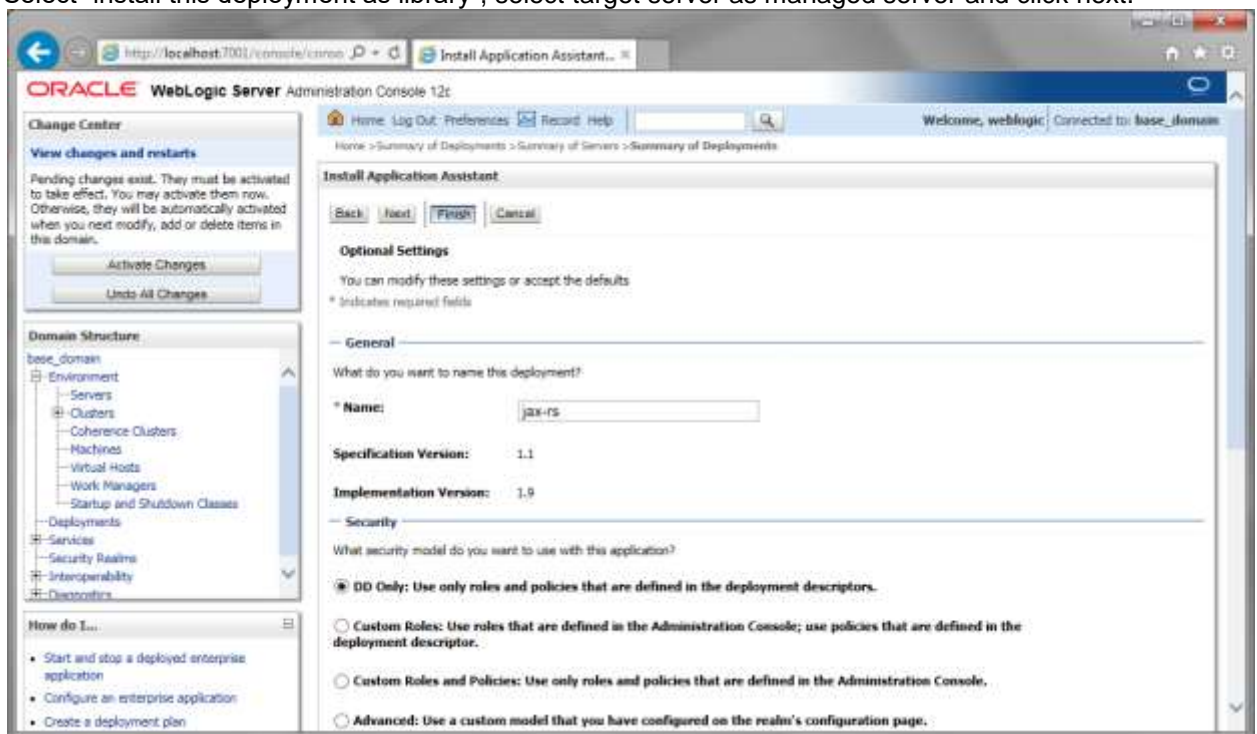
The following screen is displayed:



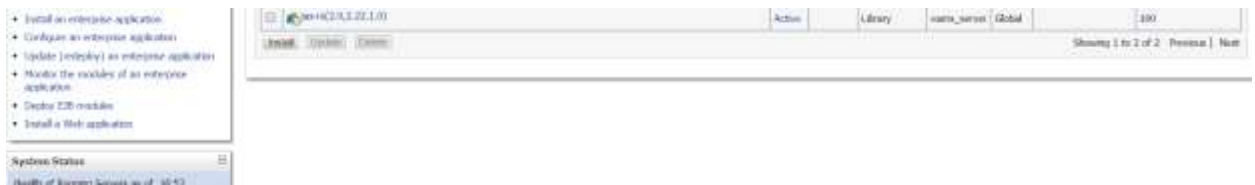
4. Click install button



Select "install this deployment as library", select target server as managed server and click next.



Click finish button



This library must appear in the deployment with Type column as “Library”

Note :- latest Jax-rs version will be jax-rs(2.0,2.22.1.0)

1.3.3 **Deploying OBTFM Application from WebLogic Administration Console**

To deploy Oracle Banking Trade Finance Application from Oracle WebLogic administration console, follow the steps given below.

1. Start the Administrative Console of WebLogic application server. You can start this by entering Oracle WebLogic Admin Console URL in the address bar in an internet browser.
Eg: <http://10.10.10.10:1001/console>

The following screen is displayed:

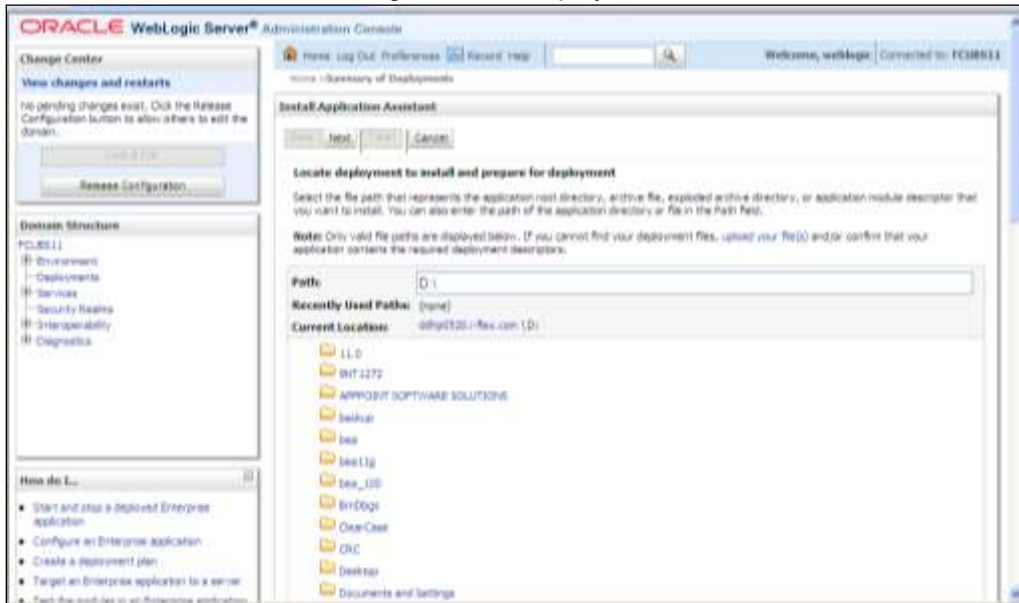


2. Specify the WebLogic administrator user name and password. Click ‘Log In’.

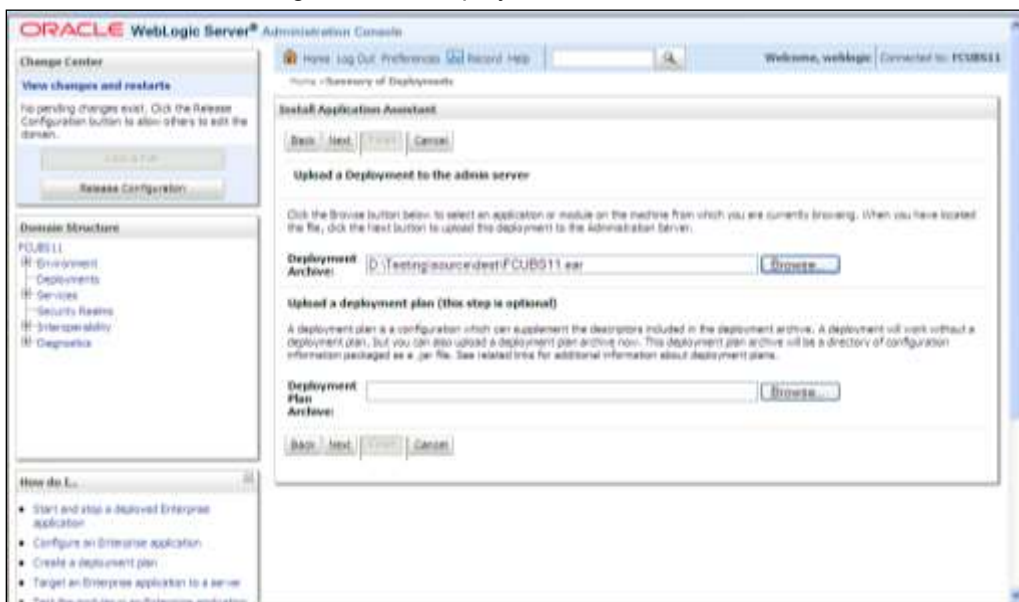
[illegible]

- [illegible]

4. Click 'Install' button. The following screen is displayed:

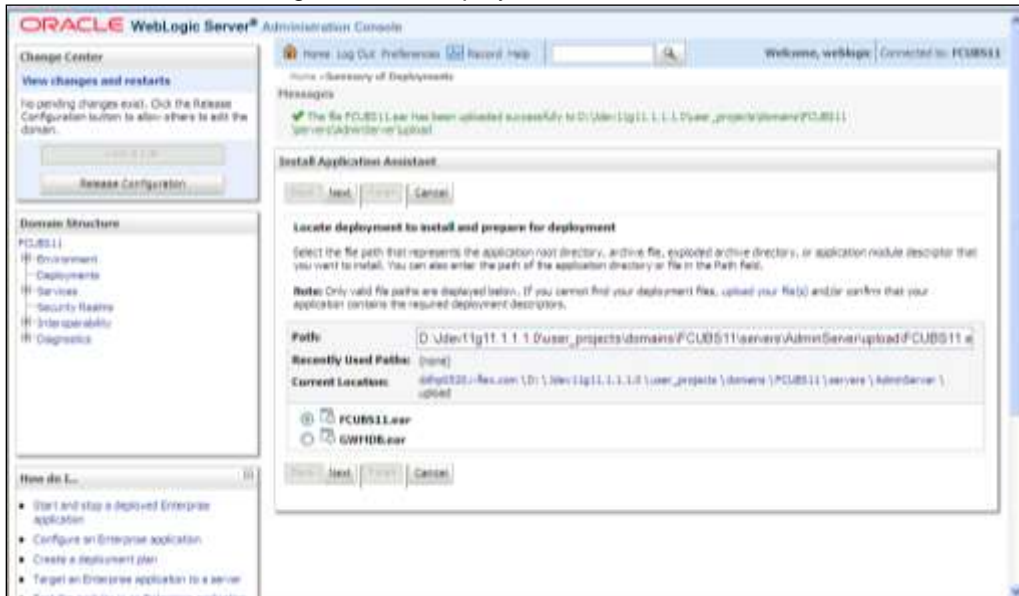


5. In order to specify the path/location of the enterprise archive file, click the link 'upload your file(s)'.
6. Click 'Next'. The following screen is displayed:



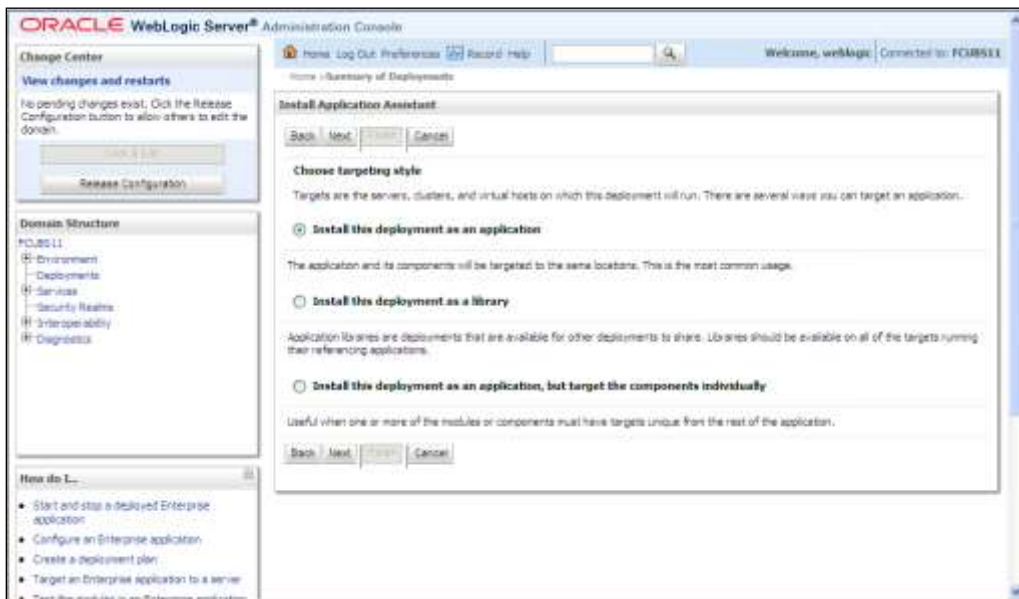
7. Specify the EAR file path. You can use the 'Browse' button to locate the file.

8. Click 'Next'. The following screen is displayed.



9. Select the application OBTM EAR created from the list.

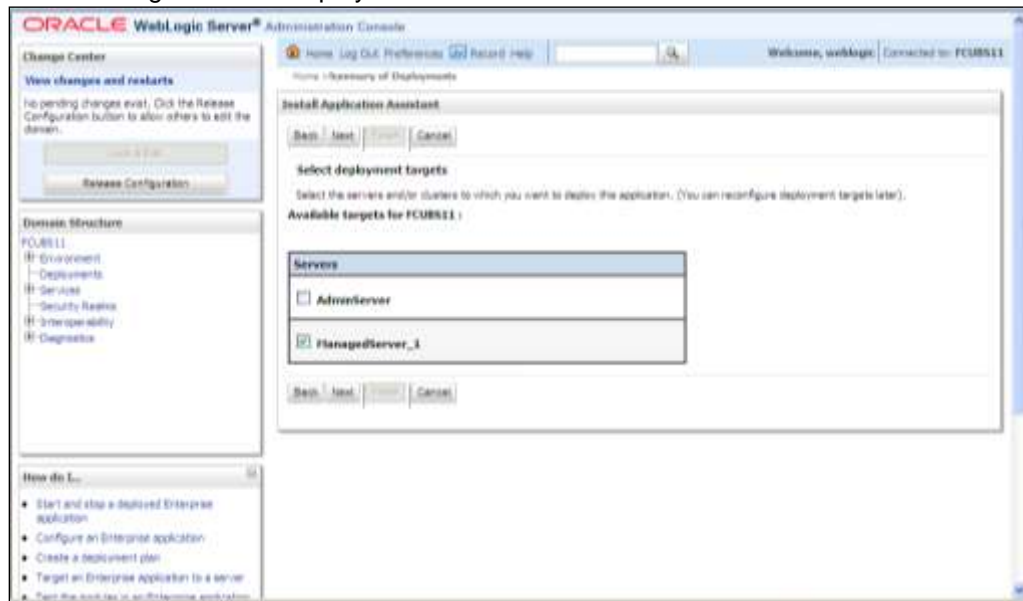
10. Click 'Next'. Following screen is displayed:



11. Choose the targeting style 'Install this deployment as an application'.

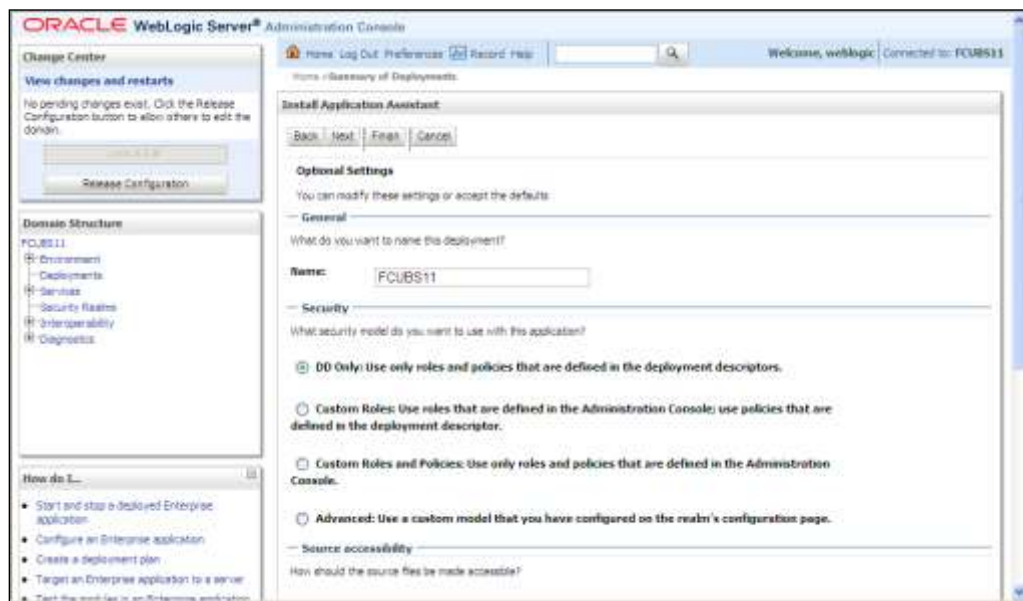
12. Click 'Next'.

The following screen is displayed



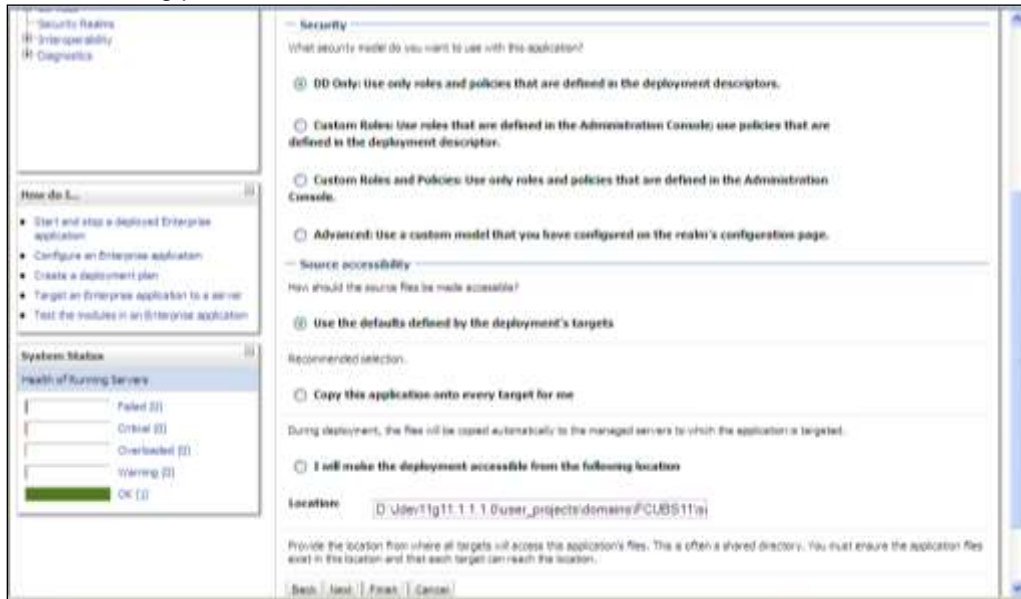
13. Select the target of the application. You can choose the server 'AdminServer' or 'Managed Server(s)'.

14. Click 'Next'. The following screen appears.



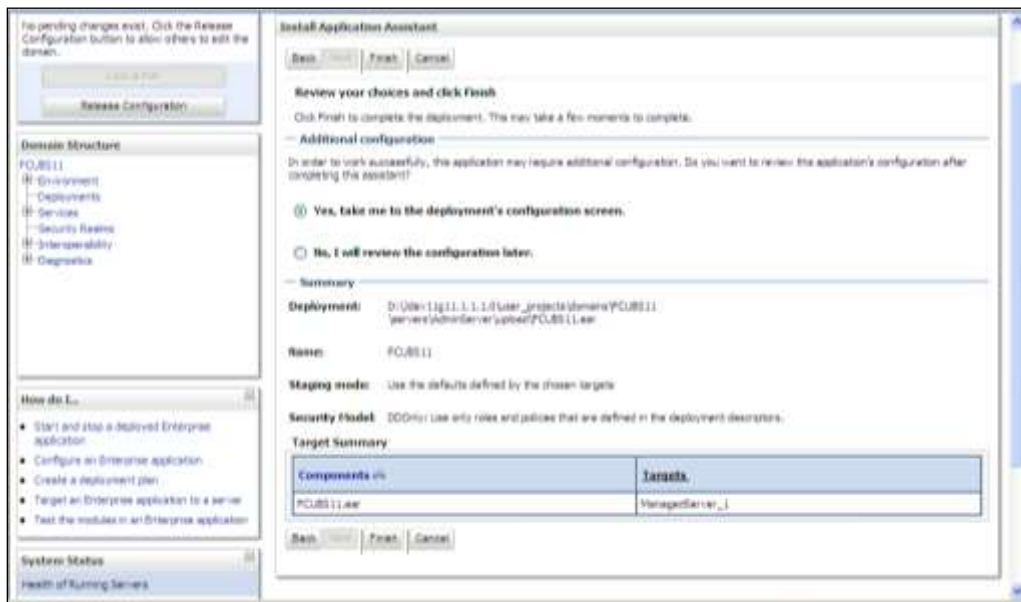
15. Check the deployment name.

The remaining portion of the screen is shown below:

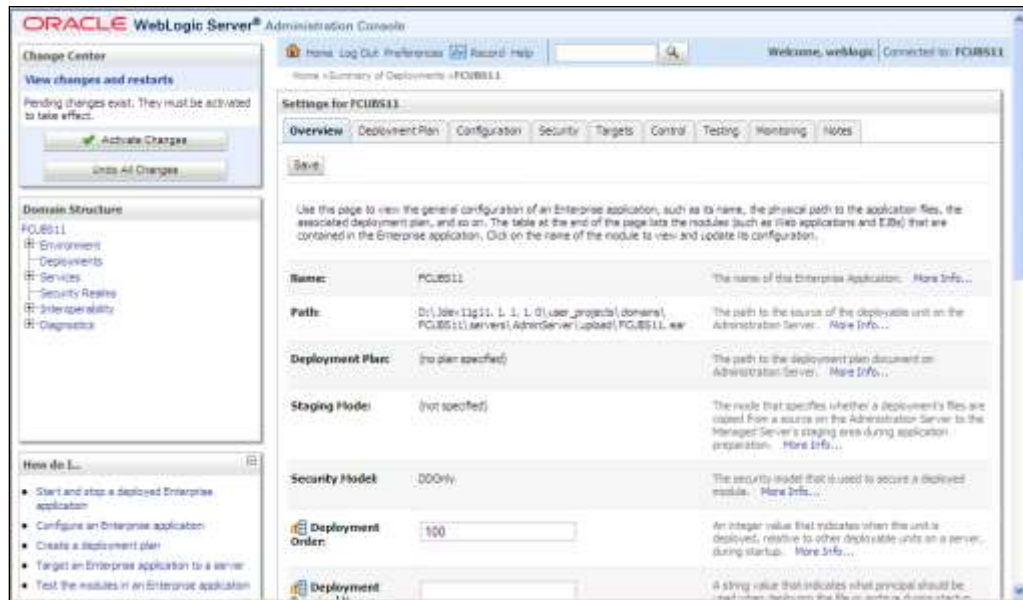


16. Check whether the deployment location is accessible or not.

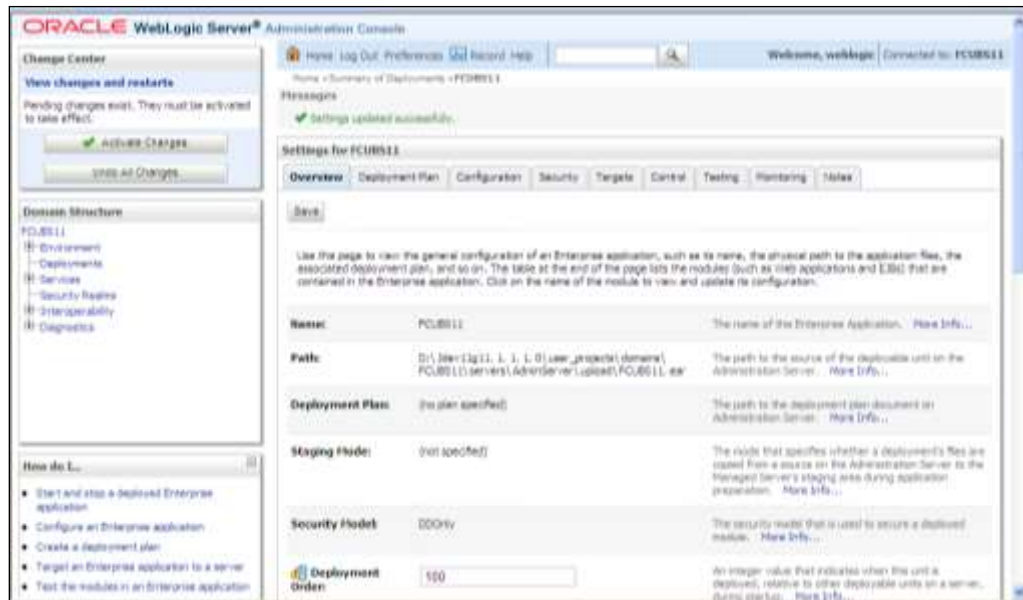
The following screen is displayed.



17. Click 'Finish' button. The following screen is displayed.



18. Click 'Save' button. The message 'Settings updated successfully' is displayed.



19. Click 'Activate Changes' button on the left pane. The message 'All the changes have been activated. No restarts are necessary' is displayed.

ORACLE WebLogic Server® Administration Console

Home Log Out Preferences Help

Welcome, weblogic Connected to: FCUBS11

Home » Summary of Deployments » FCUBS11

Messages

All changes have been activated. No restarts are necessary.

Settings for FCUBS11

Overview Deployment Plan Configuration Security Targets Control Testing Monitoring Notes

Click the **Lock & Edit** button in the Change Center to modify the settings on this page.

Lock & Edit

Use this page to view the general configuration of an Enterprise application, such as its name, the physical path to the application files, the associated deployment plan, and so on. The table at the end of this page lists the modules (such as Web Applications and EJBs) that are contained in the Enterprise application. Click on the name of the module to view and update its configuration.

Name	FCUBS11	The name of this Enterprise Application. More Info...
Path	D:\j2ee131\11_1_1_0\user_projects\domains\FCUBS11\server\AdminServer\upload\FCUBS11.ear	The path to the source of the deployable unit on the Administration Server. More Info...
Deployment Plan	(no plan specified)	The path to the deployment plan document on Administration Server. More Info...
Staging Mode	(not specified)	The mode that specifies whether a deployment's files are copied from a source on the Administration Server to the Managed Server's staging area during application preparation. More Info...
Security Model	DDOnly	The security model that is used to secure a deployed module. More Info...

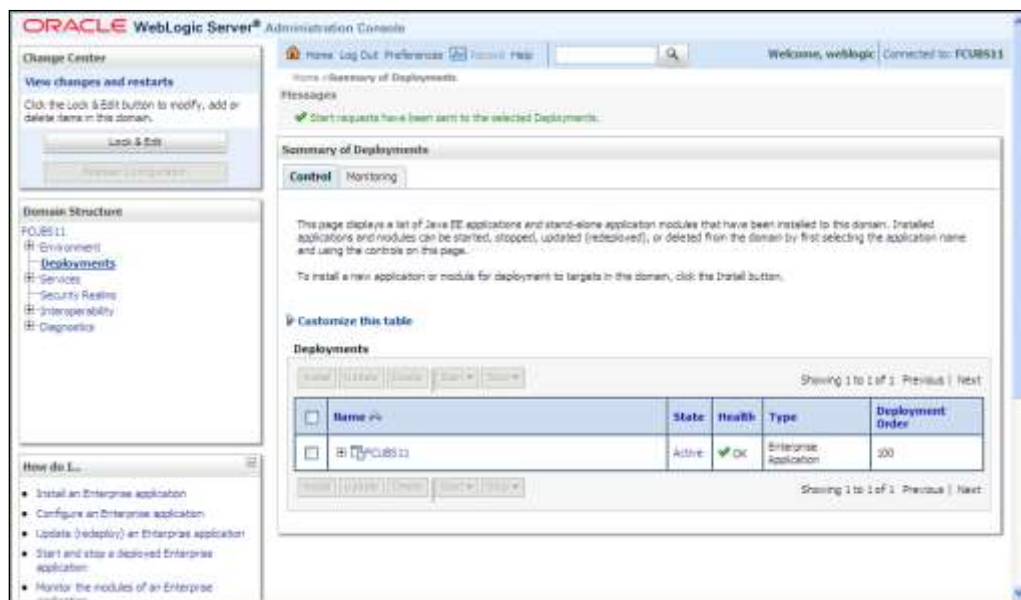
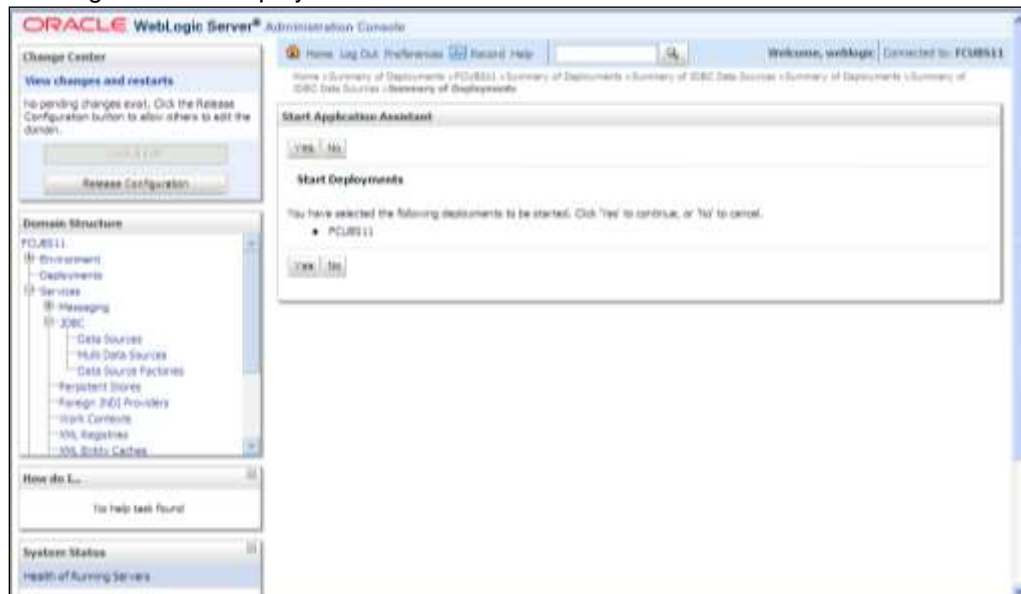
How do I...

- Start and stop a deployed Enterprise application
- Configure an Enterprise application
- Create a deployment plan
- Target an Enterprise application to a server
- Test the modules in an Enterprise application

The screenshot shows the Oracle WebLogic Server Administration Console. The main content area is titled 'Summary of Deployments'. It contains a table with the following columns: Name, Status, Type, Target, Group, and Actions. The table lists various applications and modules deployed to the 'dev1' domain. The 'Status' column shows 'OK' for all entries. The 'Type' column shows 'Application' for all entries. The 'Target' column shows 'dev1' for all entries. The 'Group' column shows 'dev1' for all entries. The 'Actions' column shows 'Deploy' for all entries.

Name	Status	Type	Target	Group	Actions
dev1	OK	Application	dev1	dev1	Deploy
dev2	OK	Application	dev1	dev1	Deploy
dev3	OK	Application	dev1	dev1	Deploy
dev4	OK	Application	dev1	dev1	Deploy
dev5	OK	Application	dev1	dev1	Deploy
dev6	OK	Application	dev1	dev1	Deploy
dev7	OK	Application	dev1	dev1	Deploy
dev8	OK	Application	dev1	dev1	Deploy
dev9	OK	Application	dev1	dev1	Deploy
dev10	OK	Application	dev1	dev1	Deploy
dev11	OK	Application	dev1	dev1	Deploy
dev12	OK	Application	dev1	dev1	Deploy
dev13	OK	Application	dev1	dev1	Deploy
dev14	OK	Application	dev1	dev1	Deploy
dev15	OK	Application	dev1	dev1	Deploy
dev16	OK	Application	dev1	dev1	Deploy
dev17	OK	Application	dev1	dev1	Deploy
dev18	OK	Application	dev1	dev1	Deploy
dev19	OK	Application	dev1	dev1	Deploy
dev20	OK	Application	dev1	dev1	Deploy
dev21	OK	Application	dev1	dev1	Deploy
dev22	OK	Application	dev1	dev1	Deploy
dev23	OK	Application	dev1	dev1	Deploy
dev24	OK	Application	dev1	dev1	Deploy
dev25	OK	Application	dev1	dev1	Deploy
dev26	OK	Application	dev1	dev1	Deploy
dev27	OK	Application	dev1	dev1	Deploy
dev28	OK	Application	dev1	dev1	Deploy
dev29	OK	Application	dev1	dev1	Deploy
dev30	OK	Application	dev1	dev1	Deploy
dev31	OK	Application	dev1	dev1	Deploy
dev32	OK	Application	dev1	dev1	Deploy
dev33	OK	Application	dev1	dev1	Deploy
dev34	OK	Application	dev1	dev1	Deploy
dev35	OK	Application	dev1	dev1	Deploy
dev36	OK	Application	dev1	dev1	Deploy
dev37	OK	Application	dev1	dev1	Deploy
dev38	OK	Application	dev1	dev1	Deploy
dev39	OK	Application	dev1	dev1	Deploy
dev40	OK	Application	dev1	dev1	Deploy
dev41	OK	Application	dev1	dev1	Deploy
dev42	OK	Application	dev1	dev1	Deploy
dev43	OK	Application	dev1	dev1	Deploy
dev44	OK	Application	dev1	dev1	Deploy
dev45	OK	Application	dev1	dev1	Deploy
dev46	OK	Application	dev1	dev1	Deploy
dev47	OK	Application	dev1	dev1	Deploy
dev48	OK	Application	dev1	dev1	Deploy
dev49	OK	Application	dev1	dev1	Deploy
dev50	OK	Application	dev1	dev1	Deploy
dev51	OK	Application	dev1	dev1	Deploy
dev52	OK	Application	dev1	dev1	Deploy
dev53	OK	Application	dev1	dev1	Deploy
dev54	OK	Application	dev1	dev1	Deploy
dev55	OK	Application	dev1	dev1	Deploy
dev56	OK	Application	dev1	dev1	Deploy
dev57	OK	Application	dev1	dev1	Deploy
dev58	OK	Application	dev1	dev1	Deploy
dev59	OK	Application	dev1	dev1	Deploy
dev60	OK	Application	dev1	dev1	Deploy
dev61	OK	Application	dev1	dev1	Deploy
dev62	OK	Application	dev1	dev1	Deploy

The following screen is displayed.



21. Click 'Yes'. The following screen is displayed.

This completes the deployment process.

1.3.4 Deploying Gateway/Scheduler Applications from WebLogic Administration Console

To deploy Oracle Banking Trade Finance Gateway/Scheduler Application from Oracle WebLogic administration console, follow the steps given below.

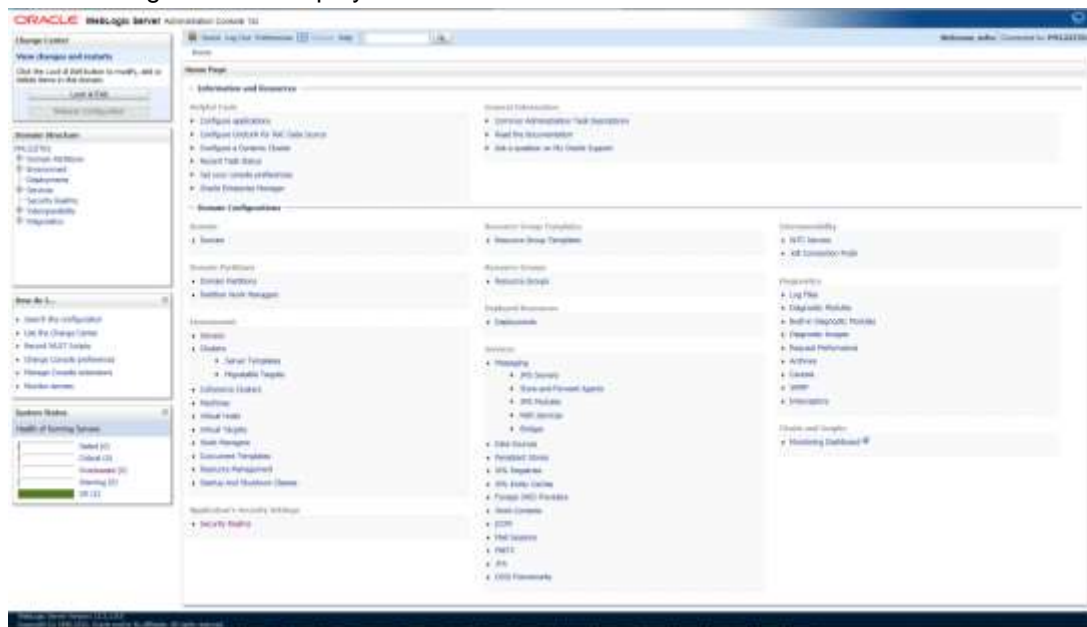
1. Launch Administrative Console of WebLogic application server. You can launch this by entering Oracle WebLogic Admin Console URL in the address bar in an internet browser.
Eg: <http://10.10.10.10:1001/console>

22. The following screen is displayed:



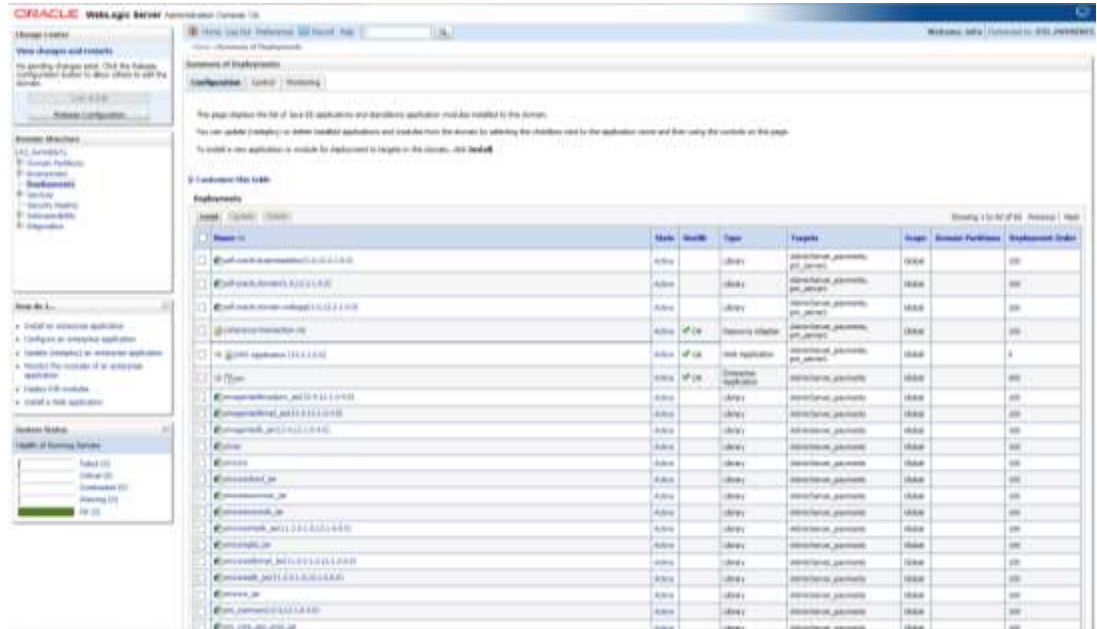
23. Specify the WebLogic administrator user name and password. Click 'Log In'.

The following screen is displayed:

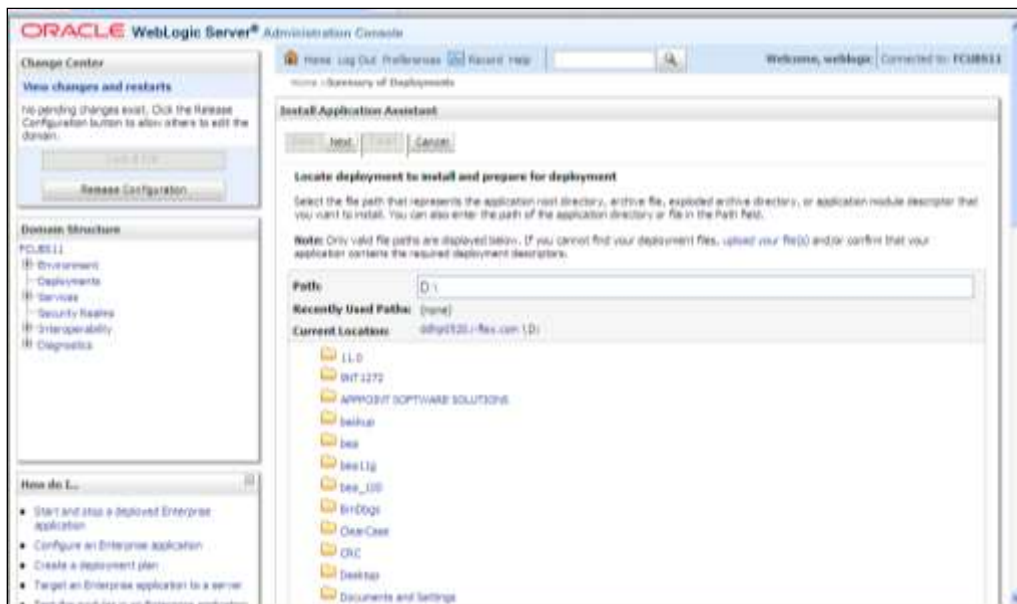


24. You need to deploy an EAR. For e.g. 'GWEJB.ear'. Go to 'Deployment'.

Click 'Lock & Edit' button to enable the buttons. This action enables the buttons.



25. Click 'Install' button. The following screen is displayed:



26. In order to specify the path/location of the enterprise archive file, click the link 'upload your file(s)'.

27. Click 'Next'. The following screen is displayed:



28. Specify the EAR file path. You can use the 'Browse' button to locate the file.

29. Click 'Next'. The following screen is displayed:



30. Select the application from the list.

31. Click 'Next'. Following screen is displayed:



32. Choose the targeting style 'Install this deployment as an application'.

33. Click 'Next'.

The following screen is displayed



34. Select the target of the application. You can choose the server 'AdminServer' or 'Managed Server(s)'.

35. Click 'Next'. The following screen is displayed.

Initial Application Assistant

Optional Settings

What do you want to name this deployment?

Name:

Security:

What security model do you want to use with this application?

☒ **DD Only:** Use only roles and policies that are defined in the deployment descriptors.

☐ **Custom Roles:** Use roles that are defined in the Administration Console; use policies that are defined in the deployment descriptors.

☐ **Custom Roles and Policies:** Use only roles and policies that are defined in the Administration Console.

☐ **Advanced:** Use a custom model that you have configured on the module's configuration page.

Source Accessibility

How should the source file be made accessible?

☒ **Use the defaults defined by the deployment's targets**

Recommended options

☒ **Copy this application onto every target for me**

During deployment, the file will be copied automatically to the Managed Servers to which the application is targeted.

☒ **I will make the deployment accessible from the following location**

Location:

Provide the location from where all targets will access this application's file. This is often a shared directory. You must ensure the application file exists in this location and that each target can reach the location.

Plan Source Accessibility

How should the plan source file be made accessible?

☒ **Use the same accessibility as the application**

36. Check the deployment name.

The remaining portion of the screen is shown below:

Initial Application Assistant

Optional Settings

What do you want to name this deployment?

Name:

Security:

What security model do you want to use with this application?

☒ **DD Only:** Use only roles and policies that are defined in the deployment descriptors.

☐ **Custom Roles:** Use roles that are defined in the Administration Console; use policies that are defined in the deployment descriptors.

☐ **Custom Roles and Policies:** Use only roles and policies that are defined in the Administration Console.

☐ **Advanced:** Use a custom model that you have configured on the module's configuration page.

Source Accessibility

How should the source file be made accessible?

☒ **Use the defaults defined by the deployment's targets**

Recommended options

☒ **Copy this application onto every target for me**

During deployment, the file will be copied automatically to the Managed Servers to which the application is targeted.

☒ **I will make the deployment accessible from the following location**

Location:

Provide the location from where all targets will access this application's file. This is often a shared directory. You must ensure the application file exists in this location and that each target can reach the location.

Plan Source Accessibility

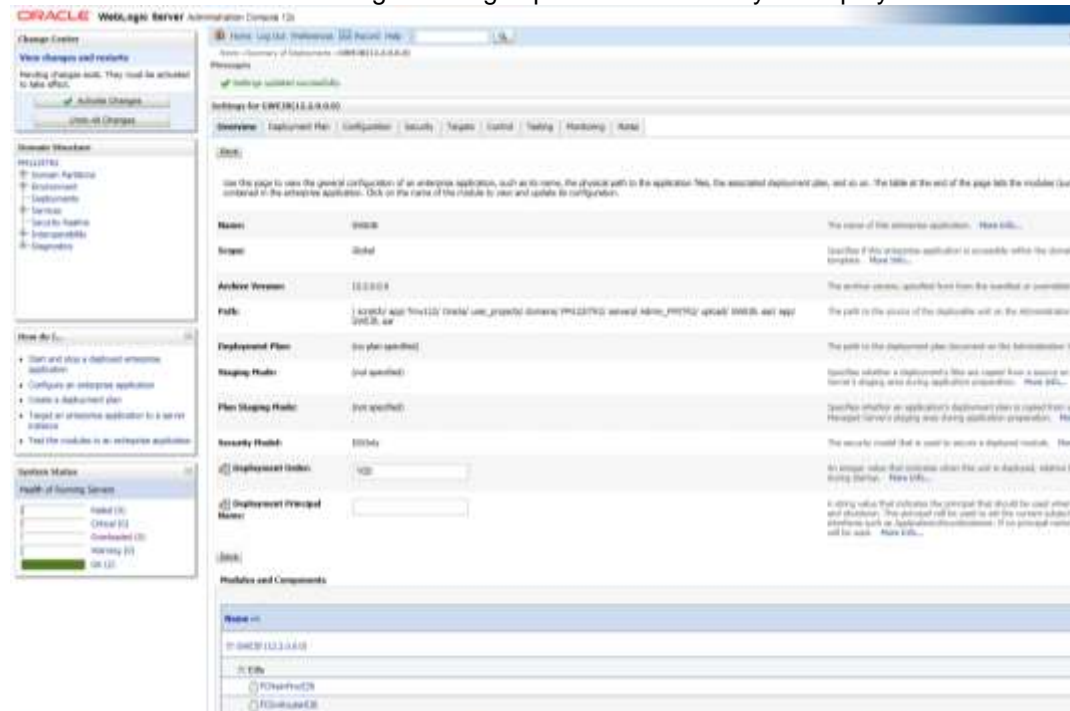
How should the plan source file be made accessible?

☒ **Use the same accessibility as the application**

The screenshot displays the Oracle WebLogic Server Administration Console. The top navigation bar includes 'Home', 'Log Out', and 'Help'. The main content area is titled 'Install Application Assistant'. It features a 'Release Configuration' button and a 'Deployments' section. The 'Deployments' section lists several deployments, with 'WebLogicServer' selected. The details for 'WebLogicServer' are shown, including its 'Name', 'Status', 'Sizing Model', 'Plan Sizing Model', 'Security Model', and 'Scope'. The 'Sizing Model' is set to 'Default'. The 'Plan Sizing Model' is set to 'Use the same accessibility as the application'. The 'Security Model' is set to 'Default'. The 'Scope' is set to 'Global'. The 'Target Summary' table shows the 'Components in' and 'Targets' for the deployment.

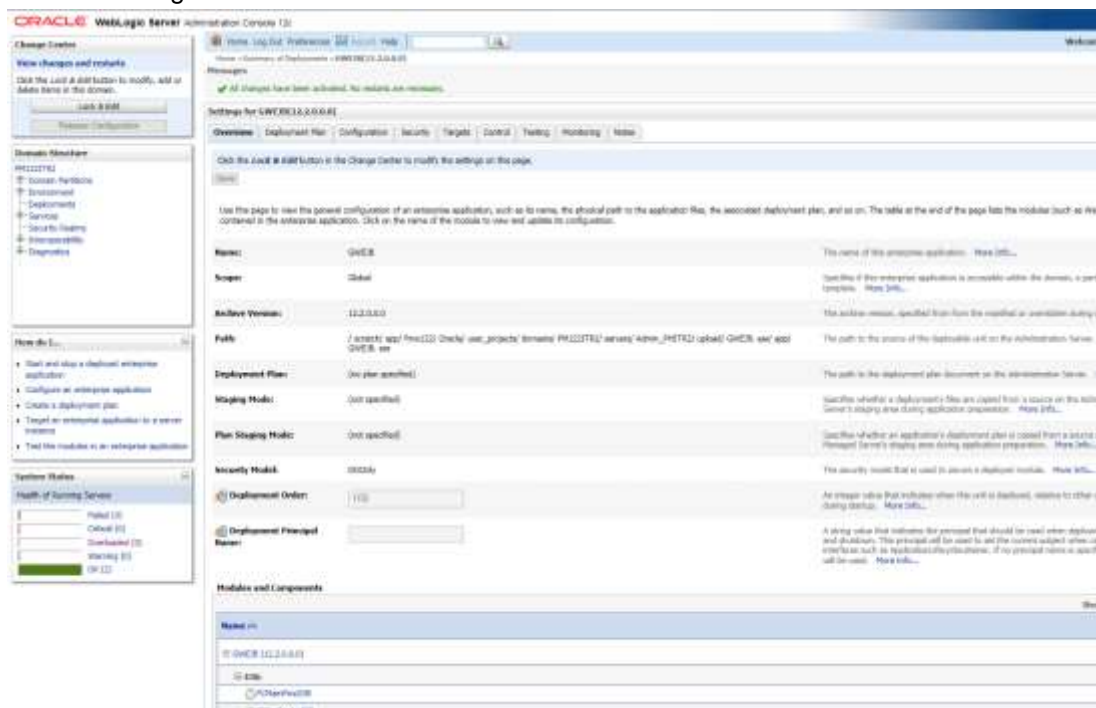
[illegible]

38. Click 'Save' button. The message 'Settings updated successfully' is displayed.

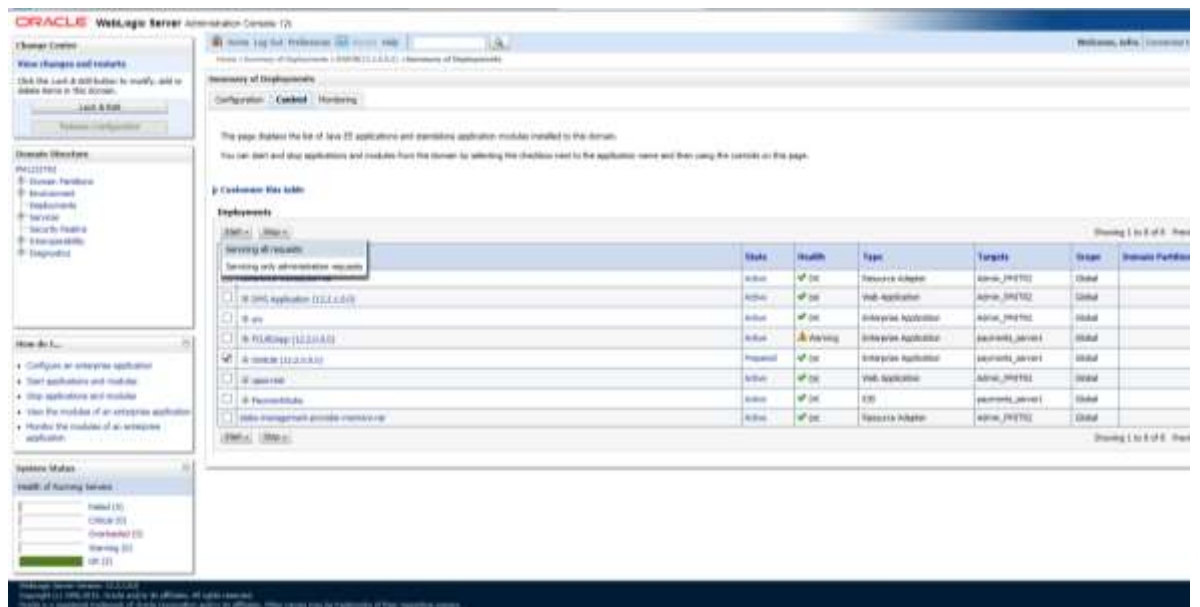


39. Click 'Activate Changes' button on the left pane. The message 'All the changes have been activated. No restarts are necessary' is displayed.

The screen is given below:



Click 'Deployment' on the left pane. Switch to Control tab. The following screen is displayed.

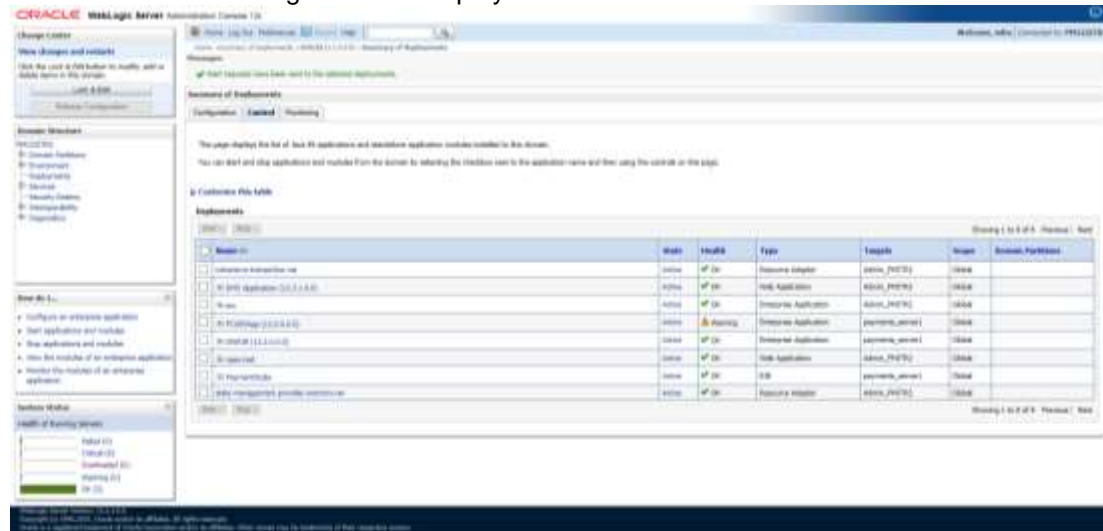


40. Click 'Start' drop-down button and select 'Servicing all requests'.

41. The following screen is displayed.



42. Click 'Yes'. The following screen is displayed.



This completes the deployment process.

1. Repeat the same steps from 1.3.3 for deploying GWWS(gateway webservice),Gateway MDB & Gateway HTTP servlet



Deploying Oracle Banking Trade Finance on WebLogic

[April] [2020]

Version 14.4.0.0.0

Oracle Financial Services Software Limited

Oracle Park

Off Western Express Highway

Goregaon (East)

Mumbai, Maharashtra 400 063

India

Worldwide Inquiries:

Phone: +91 22 6718 3000

Fax: +91 22 6718 3001

<https://www.oracle.com/industries/financial-services/index.html>

Copyright © [2007], [2020], Oracle and/or its affiliates. All rights reserved.

Oracle and Java are registered trademarks of Oracle and/or its affiliates. Other names may be trademarks of their respective owners.

U.S. GOVERNMENT END USERS: Oracle programs, including any operating system, integrated software, any programs installed on the hardware, and/or documentation, delivered to U.S. Government end users are "commercial computer software" pursuant to the applicable Federal Acquisition Regulation and agency-specific supplemental regulations. As such, use, duplication, disclosure, modification, and adaptation of the programs, including any operating system, integrated software, any programs installed on the hardware, and/or documentation, shall be subject to license terms and license restrictions applicable to the programs. No other rights are granted to the U.S. Government.

This software or hardware is developed for general use in a variety of information management applications. It is not developed or intended for use in any inherently dangerous applications, including applications that may create a risk of personal injury. If you use this software or hardware in dangerous applications, then you shall be responsible to take all appropriate failsafe, backup, redundancy, and other measures to ensure its safe use. Oracle Corporation and its affiliates disclaim any liability for any damages caused by use of this software or hardware in dangerous applications.

This software and related documentation are provided under a license agreement containing restrictions on use and disclosure and are protected by intellectual property laws. Except as expressly permitted in your license agreement or allowed by law, you may not use, copy, reproduce, translate, broadcast, modify, license, transmit, distribute, exhibit, perform, publish or display any part, in any form, or by any means. Reverse engineering, disassembly, or decompilation of this software, unless required by law for interoperability, is prohibited.

The information contained herein is subject to change without notice and is not warranted to be error-free. If you find any errors, please report them to us in writing.

This software or hardware and documentation may provide access to or information on content, products and services from third parties. Oracle Corporation and its affiliates are not responsible for and expressly disclaim all warranties of any kind with respect to third-party content, products, and services. Oracle Corporation and its affiliates will not be responsible for any loss, costs, or damages incurred due to your access to or use of third-party content, products, or services.